

## FC 302 Hz Major 16 EDS file

### **Abstract**

This document shows how to configure the FC 302 Drive the first time together with the FC302\_Hz\_Major16\_Minor10 EDS file and how to replace a new FC 302 Drive (major 16) with a old FC 302 (major 15).

### **Used software:**

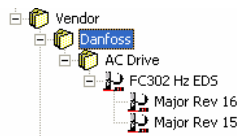
RS Networkx for DeviceNet 8.00.00

FC 302 software version 4.51 and EDS file FC302\_Hz\_Major16\_Minor10.

FC 302 software version 4.35 and EDS file FC302\_Hz\_Major15\_Minor30.

See software version in parameter 15-43 *Software version*.

See the EDS file revision in parameter 10-32 *DeviceNet Revision*.

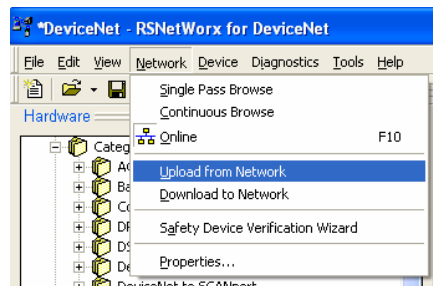


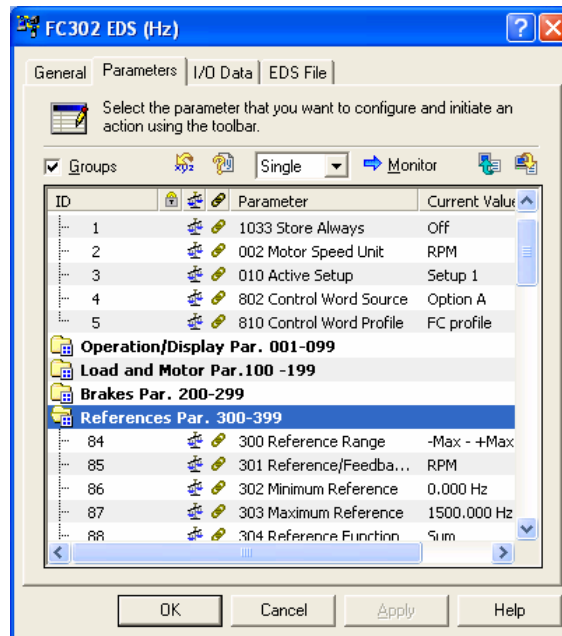
### **First time uploading to RS Networkx**

Motor data, current limits etc. need to be uploaded for each Drive on the network before changing parameter settings in the FC 302. A new FC 302 Drive has from the factory rpm parameters as default setting. The first upload via the Hz EDS file will cause some wrong data in the RS Networkx file if the FC 302 parameter 002 *Motor Speed Unit* isn't set to Hz.

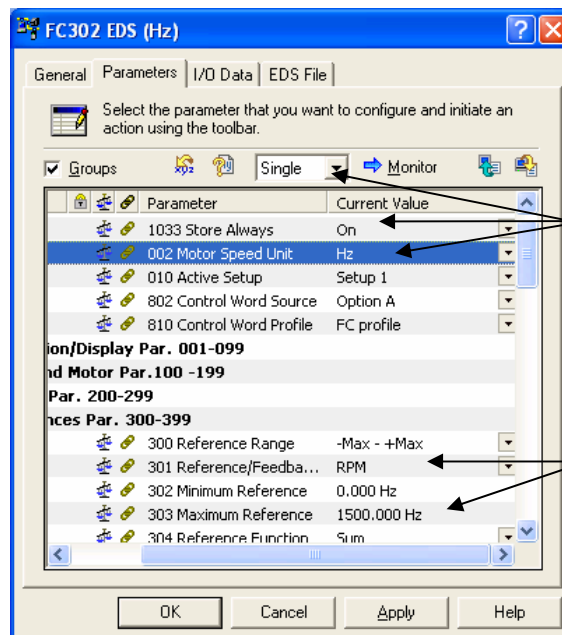
To ensure correct data in the RS Networkx file change parameter 002 *Motor Speed Unit* from rpm to Hz with the LCP before the first upload or change the parameter via the EDS file as shown below.

Go on-online in RE Networkx and choose *Network* and *Upload from Network*.





Parameter 303 *Maximum Reference* is shown as 1500.000 Hz.

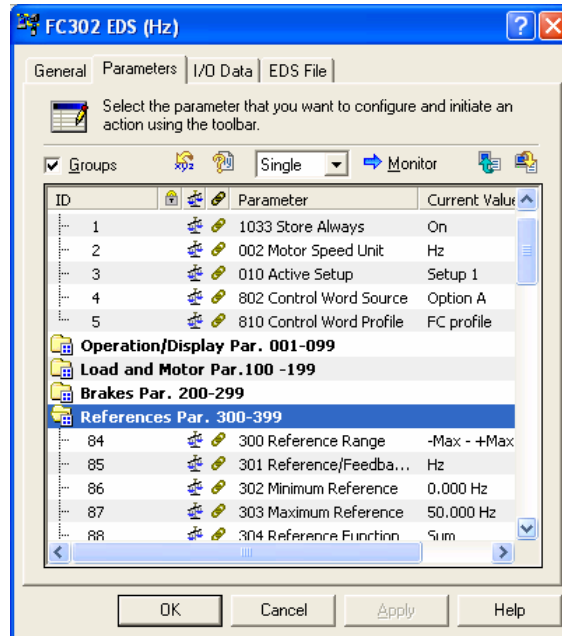


Set par. 10-33 *Store Always* to On.  
Set par. 002 *Motor Speed Unit* to Hz  
Download these two parameters.

Wrong settings in the Hz EDS file

Change parameter 002 *Motor Speed Unit* to Hz and download this parameter only.

Upload all parameters again and all data is now shown correct in the RS Networkx file.



## **Replacing a FC 300**

RS Networkx file: The RS Networkx project file is created with FC 302 software version 4.51 and then also with the EDS file FC302\_Hz\_Major16\_Minor10.

Replace FC 300: FC 302 software version 4.51 (major 16)

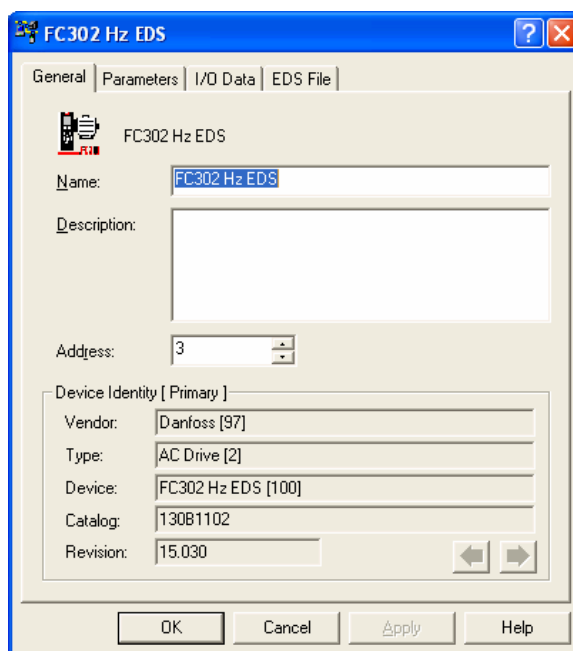
This can be done without any change with a FC 302 from factory setting.

---

RS Networkx file: The RS Networkx project file is created with FC 302 software version 4.35 and then also with the EDS file FC302\_Hz\_Major15\_Minor30.

Replace FC 300: FC 302 software version 4.51 (major 16)

Please follow this instruction:



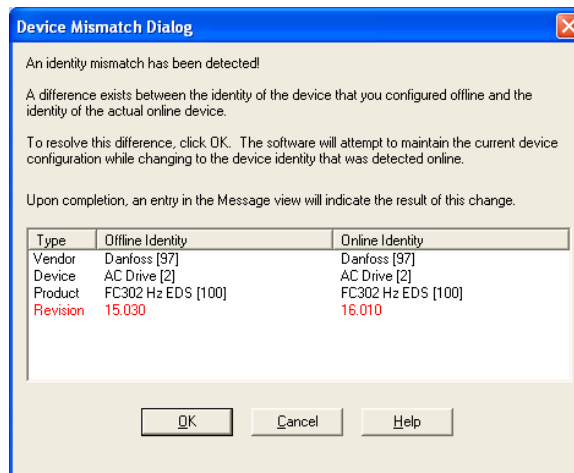
From the RS Networkx project file and by *General* and *Revision* it can be seen that the original FC 302 has a Major Revision 15 and a minor 30.

Replace the FC 302 and connect the new FC 302 to the DeviceNet network with the same address as the replaced Drive.

FC302 Hz EDS

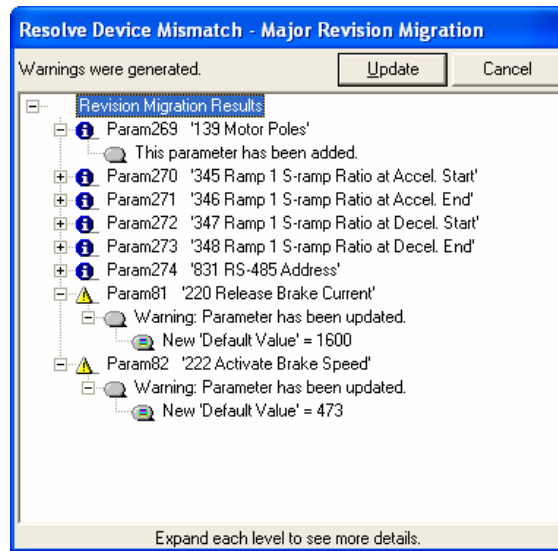


Go online and browse the Network. A blue mark means that there is a Device Mismatch and in this case the Device at address 03 in the project file has a major revision 15 whereas the new replace Drive has major revision 16.

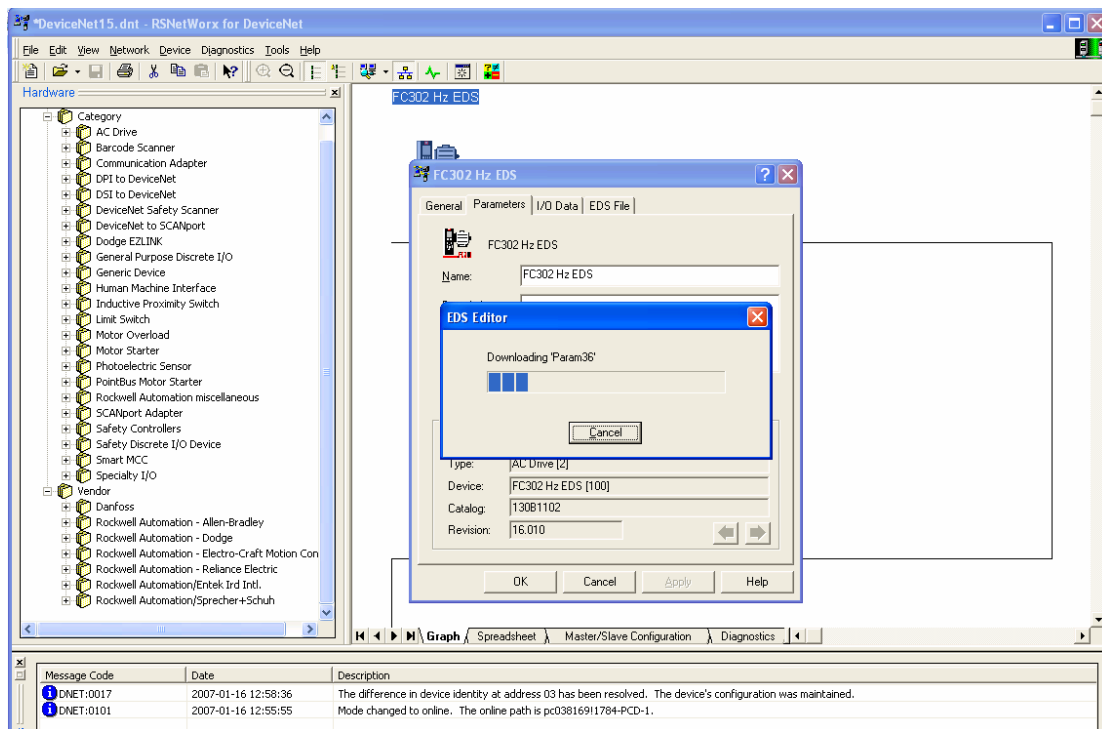


Double click on the Drive and the Device Mismatch Dialog bow shows the difference.

Click on OK.



Here the differences are shown between the two files. Click on Update and the RS Networkx project file is updated from major 15 to 16 by Device address 03.



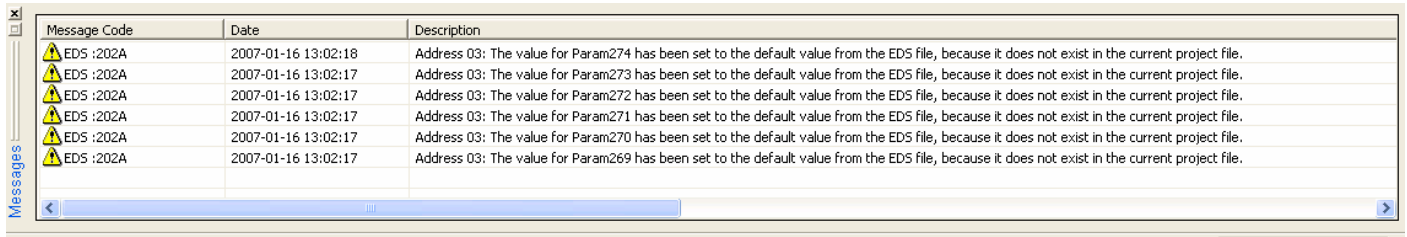
The parameters can now be downloaded to the new FC 302 Major 16.  
Save the RS Networkx file.



Author: John Bargmeyer/ DD-DBS  
Created: 2007-01-24

**Danfoss Drives A/S**  
Software Support

Notice next time the RS Network file is open then these messages will be shown. These messages is only shown the first time after a update.



Message Code	Date	Description
⚠ EDS :202A	2007-01-16 13:02:18	Address 03: The value for Param274 has been set to the default value from the EDS file, because it does not exist in the current project file.
⚠ EDS :202A	2007-01-16 13:02:17	Address 03: The value for Param273 has been set to the default value from the EDS file, because it does not exist in the current project file.
⚠ EDS :202A	2007-01-16 13:02:17	Address 03: The value for Param272 has been set to the default value from the EDS file, because it does not exist in the current project file.
⚠ EDS :202A	2007-01-16 13:02:17	Address 03: The value for Param271 has been set to the default value from the EDS file, because it does not exist in the current project file.
⚠ EDS :202A	2007-01-16 13:02:17	Address 03: The value for Param270 has been set to the default value from the EDS file, because it does not exist in the current project file.
⚠ EDS :202A	2007-01-16 13:02:17	Address 03: The value for Param269 has been set to the default value from the EDS file, because it does not exist in the current project file.